

[Click here](#) if you can't read this newsletter.



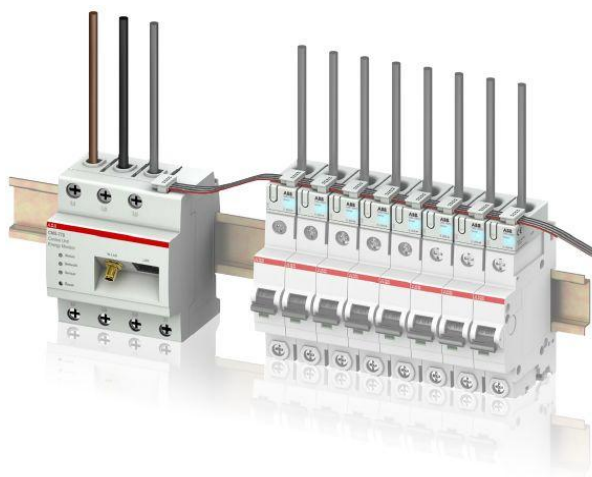
2015-02-10

[Archive](#) | [Edit profile](#) | [Forward](#) | [Subscribe](#) | [Unsubscribe](#)

Energy monitor - a new addition to the CMS family

Dear colleagues,

ABB is proud to announce the launch of the new CMS-770 Control Unit called Energy Monitor from the Circuit Monitoring Systems (CMS) family. This device provides the user the possibility to measure power and energy on main level as well as branch level including a webserver interface developed with the end user in mind.

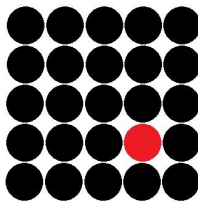


System description

The Energy Monitor is a three-phase measurement device to measure power and energy up to 63A per phase. Additionally, up to eight current sensors can be connected to the device in order to gather the power and energy data of individual branch circuits.

The CMS-770 Control Unit offers a perfect integration within new or existing building infrastructure.

Everything you need in one device



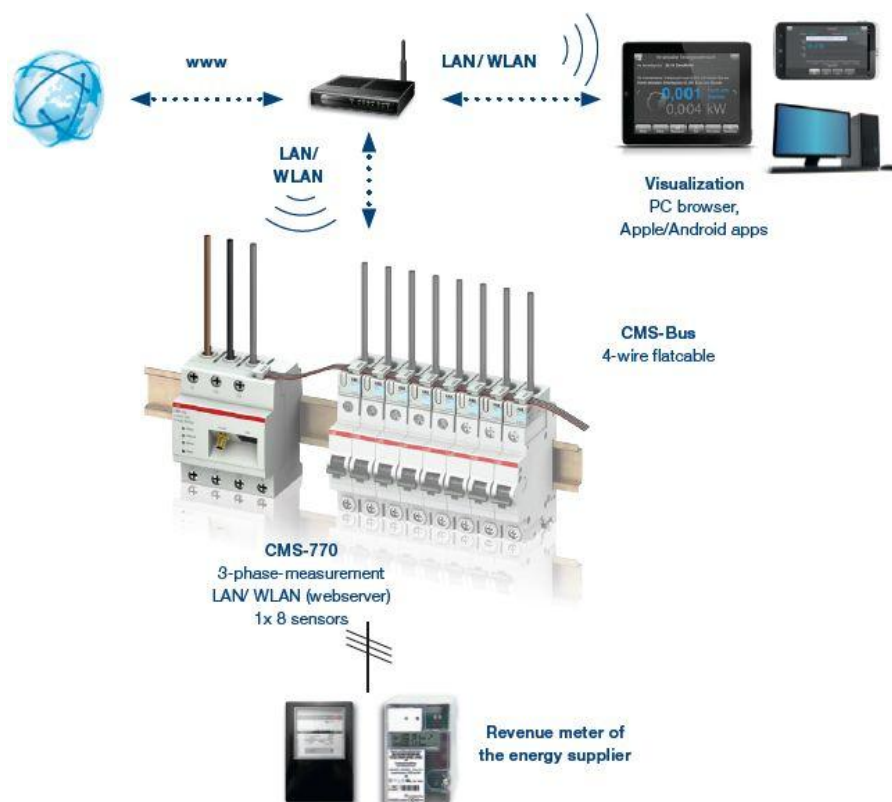
Imagine!

Imagine to install a device in your existing consumer unit. It measures the rough energy usages per branch, which could be visualized by logging in via your pc or mobile phone. Make your energy usage transparent, find your energy thieves and save money.



System solution

The Energy Monitor includes connectivity directly to a network via LAN or WLAN. With its user-friendly web-interface, thanks to its inbuilt webserver, the user can get visualization directly in the user's PC browser or in Android and iOS apps. The interface is developed to be attractive for the user and easy to use. If needed the user can also do a manual or automatic CSV data export to import into excel or other tools.



Applications and benefits

Consumption analysis to save and allocate costs - The Energy Monitor helps to represent and analyze the consumptions. Furthermore, the calculated active energy can be used for a rough cost allocation on branch level making the energy usage transparent for the user.

- **Minimal space requirements** - Due to the compact sizes of the sensors there is no additional space needed in the enclosure. The compactness allows the retrofitting in existing installations.
- **User-friendly commissioning** - The intuitive navigation layout allows the system to be set up on the touch screen. Within minutes, it is ready to start measuring.
- **Maximum flexibility** - Due to the full scalability the user can freely choose the amount of measurement points he needs. Sensors can even be installed one by one at a later date. The various mounting possibilities allow the use in every installation environment.
- **Easy installation** - The sensors are mounted in a few easy steps. The connection technology can be installed without special tools and there is no longer any need for expensive conventional cabling.

Positioning

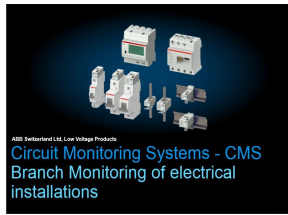
The energy monitor is positioned as a branch measurement device which belongs to the measurement family together with energy meters, power meters and instruments. The energy monitor is targeted to higher end customers with the need of main and branch measurements.

Marketing Tools



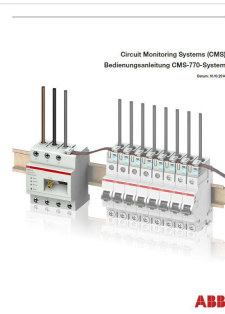
Catalogue

Download the [new updated CMS catalogue](#). Inside, you can find the complete range with all the codes, technical data, system information, benefits and all information you may need. Request hardcopies or the Indesign files through your Area Sales Manager to translate the catalogue in your local language, print and distribute it to all your customers and sales persons.



Energy Monitor presentation

Download the [product presentation](#), containing the range description and the system benefits. Also containing system technology, installation and configuration, Modbus communication, and technical data. Use it to learn information about product and how it works and present to your Customers.



User manual

Download the [User manual](#). In the User manual everything about how to install the CMS, configure it, technical data and all the mapping for Modbus RTU protocol could be found.

Show it to the Customers and they will have all the needed information to use the CMS, from installation to reading values.



Sample case

Use the sample case to learn how to use Energy Monitor and bring it out to the Customers to show how the system works. It will be available from 1st of January 2015. Ask your Area Sales Manager to receive yours (the picture shows the sample case including the CMS-600 control unit, not the Energy Monitor)

Other Tools



P+M portal

Find the most recent and accurate information on CMS page in the [product launch](#) section of P+M portal. Links to marketing material, certificates and other useful tools can all be found here.
[Check it out now!](#)

Webpage

Check out the updated [webpage](#) including information about the CMS, available marketing material and user manual

Local Launch Management

Define your local launch plan and if needed ask support from your Area sales manager and Product Marketing Manager.

Actions to be done

- **download and read** the available documentation found here above and download the **POD data** from [ABB Products](#)
- make the product available in your **SAP** and available for orders from the 1st of December 2014
- define **target customers**
- **position the product** on local market places

- define the **selling price** for your country
- **contact your Area Sales Manager** with feedback for local price positioning
- contact your Area sales manager if you want printed hardcopies of the **marketing material**, samples or product trainings
- put the new products in your LSU **catalogue** and on your local **homepage**
- show the product on **local fairs**
- **visit your customers** and send them the marketing material
- **enjoy selling the Energy monitor!**

Products will be available for orders from 1th of January 2015!



Want to learn more?

A webinar will be provided, giving you more deep understanding of the Energy Monitor and how to launch and sell it.

Register your interest to participate in this webinar by filling in your name [here](#). More detailed information will be sent you with a proposed time for this webinar.

Localize your marketing tools

Don't forget to make the most of [Marketing à la carte](#) to customize for your country the already available marketing material.

Why the new name for CMS?

With the launch of the new Energy Monitor, the name Current Measurement System, also known as CMS, is changed to Circuit Monitoring Systems, still CMS. The first generation was measurements of current on branch level, with the new device it is also possible to measure the main branch and it can give power and rough energy measurements as well. Therefore it is more than a current measurement device and the family is now called Circuit Monitoring System (CMS).

Best regards,

[Aron Svedin](#)

Product Marketing Manager - Insert Product Line

LPED International Marketing and Sales - [On Inside](#)